

SKYNET FILES

SPIDER TANK BUILDER

SO THIS IS A SHORT HOW 2 OR PERHAPS IT WOULD BE BETTER TERMED HOW I MADE ONE OF MY (AHUM I HAVE A FEW I LIKE SHINY THINGS) SPIDER TANKS. THIS IS OBVIOUSLY THE AWESOME SPIDER TANK FROM RIVER HORSE CURRENTLY THE LARGEST MODEL FOR THE TERMINATOR GENISYS MINIATURE GAME.

NOT TRYING TO INSULT YOU HERE BUT REMEMBER THAT RESIN DUST IS HAZARDOUS AND WE WILL BE USING SHARP KNIVES SUPER GLUE ETC. SO BE CAREFUL YOUR ARE NOT CYBORG INFILTRATOR.



SO YOU OBVIOUSLY HAVE IN YOUR POSSESSION OR INTEND SHORTLY TO GET A SPIDER TANK. LUCKY YOU!!!

TO ASSEMBLE THIS BEAST YOU WILL ALSO NEED THE FOLLOWING ITEMS. (SORRY IF THIS IS STATING THE OBVIOUSLY BUT I WANTED TO COVER THE BASICS.....)

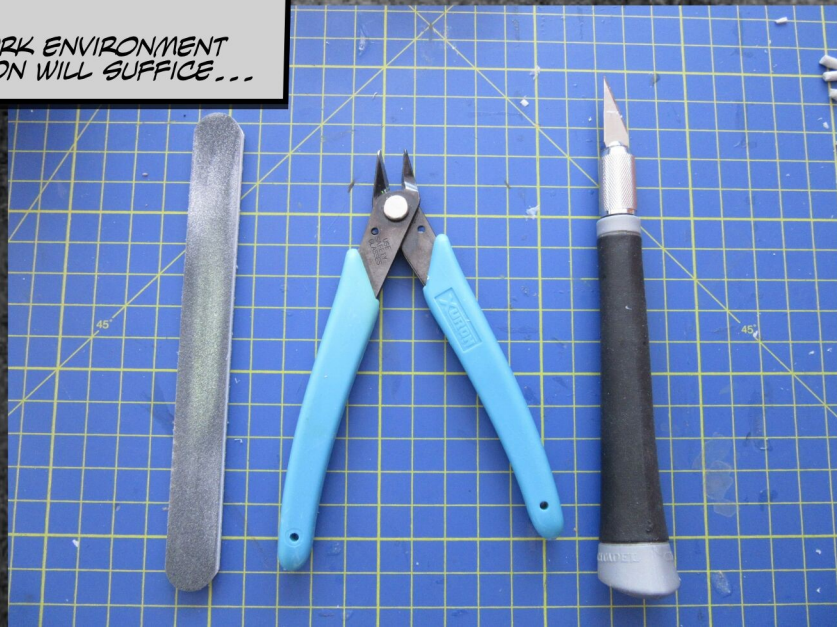
SHARP CRAFT KNIFE OR SCALPEL.

SIDE CUTTER OR SNIPS

FILE OF SOME KIND... I USED A NAIL BUFFER TO GOOD EFFECT (SO ASK THE WIFE FIRST OR MAKE SURE SHE NEVER FINDS OUT YOU USED IT. IF YOU DON'T HAVE A WIFE THEN YOU CAN PROBABLY AFFORD ANOTHER SOME REAL TOOLS.....)

SUPER GLUE AND I WOULD SUGGEST SOME ACTIVATOR (IF YOU HAVE NEVER USED IT BEFORE YOU MAY WONDER HOW YOU LIVED WITHOUT IT)

OBVIOUSLY IT WOULD PAY TO HAVE A SUITABLE WORK ENVIRONMENT BUT THE KITCHEN TABLE (WITH SUITABLE PROTECTION WILL SUFFICE...



SO FIRST STEP IS TO CHECK ALL THE PARTS..... YOU SHOULD HAVE THE FOLLOWING:-

4 LEGS(IF YOUR OLD LIKE ME YOU WILL PROBABLY BE THINKING ZZ TOP OR SUBCONCIOUSLY HUMMING ITNO JUST MEOH DEAR..)

2 PARTS OF THE TORSO HANDED...(LEFT AND RIGHT)

4 ARM PARTS THESE ARE HANDED TO MAKE A LEFT AND A RIGHT ARM..... SOME MANY BARRELS (CLEARLY SKYNET WAS COMPENSATING FOR SOMETHING HERE.....)

2 PARTS OF THE HEAD..... (IT A VERY BIG HEAD AND I HAVE NOTHING FUNNY TO SAY ABOUT THAT.....HONESTLY!)

CLEAN UP TIME

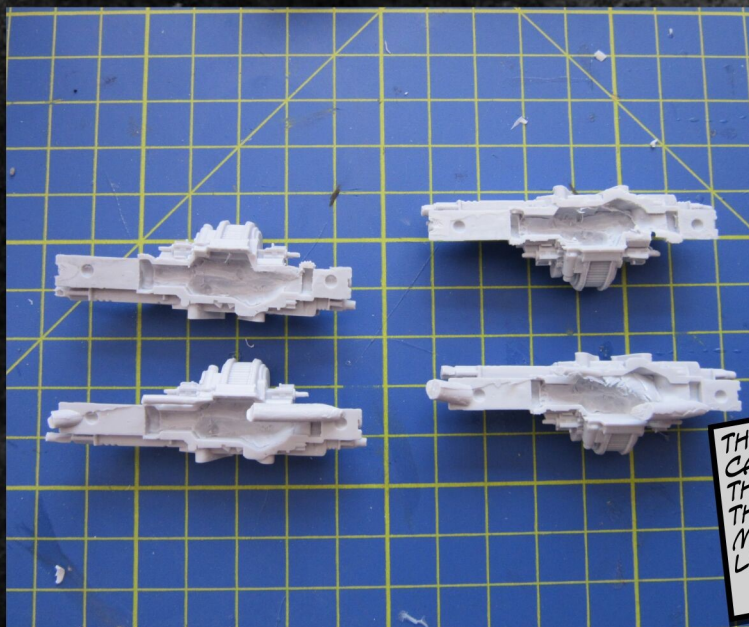


START BY CLEANING UP THE PIECES.....

LEGSSNIP OFF THE EXCESS FROM THE CASTING AND POLISH/FILE TO TIDY UP AROUND THE EDGES..



HERE'S THAT LARGE HEAD! AGAIN CLEAN UP THE EDGES AND CHECK THE FIT. IT WILL ONLY GO ONE WAY ROUND



THE ARMS/GUNS NEED CAREFUL WORK WITH THE KNIFE TO REMOVE THE UNWANTED MATERIAL AND MOULD LINES.....

SO THE SERIOUS BIT HERE CHOICE TIME!!
DO YOU JUST CLEAN UP THE TORSO OR
CUT OUT SOME OF THE MATERIALS TO
OPEN IT UP. --- WELL I CUT AWAY ALL THE
MATERIAL I THOUGHT WAS NOT
REQUIRED. ---

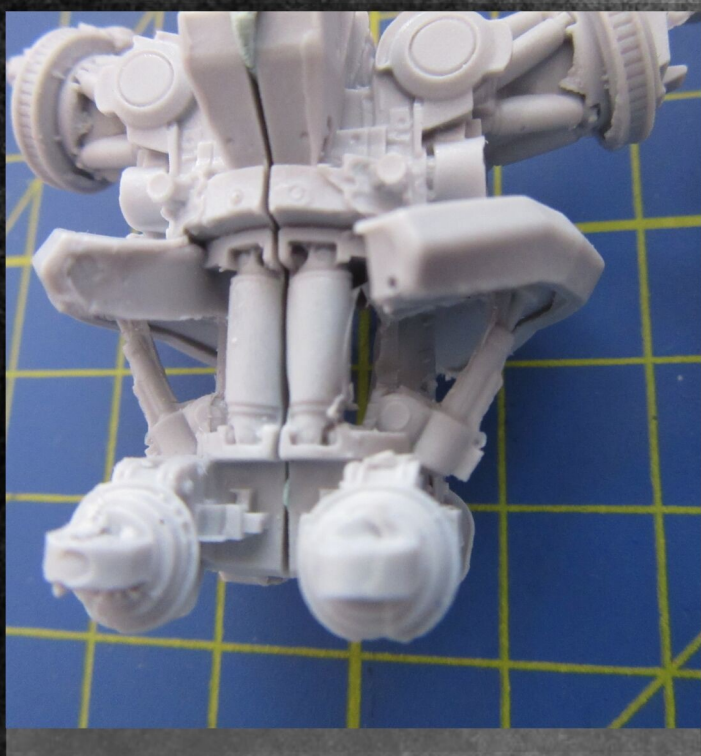
I WOULD SAY YOU DONT HAVE TO DO THE
EXTRA WORK AND I HAVE A SPIDER TANK
THAT I DIDNT DO IT ON. ---

BUT I WILL BE DOING MY NEXT ONE THE
SAME AS THIS. --- TOLD YOU I HAD A
FEW. ---

TOP ARE THE TWO PARTS FULLY
CLEANED UP AND TRIMMED. ---
LOWER IS HOW THEY START
OUT. ---



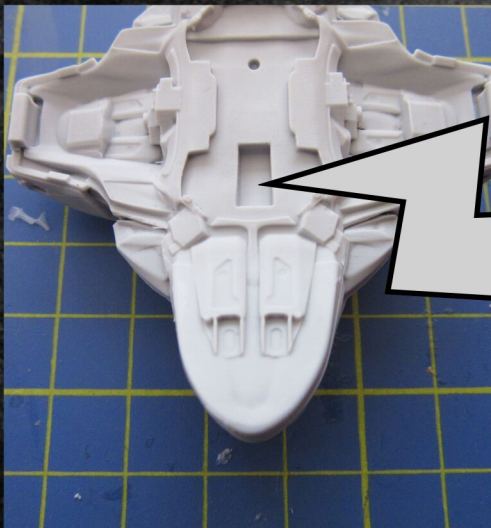
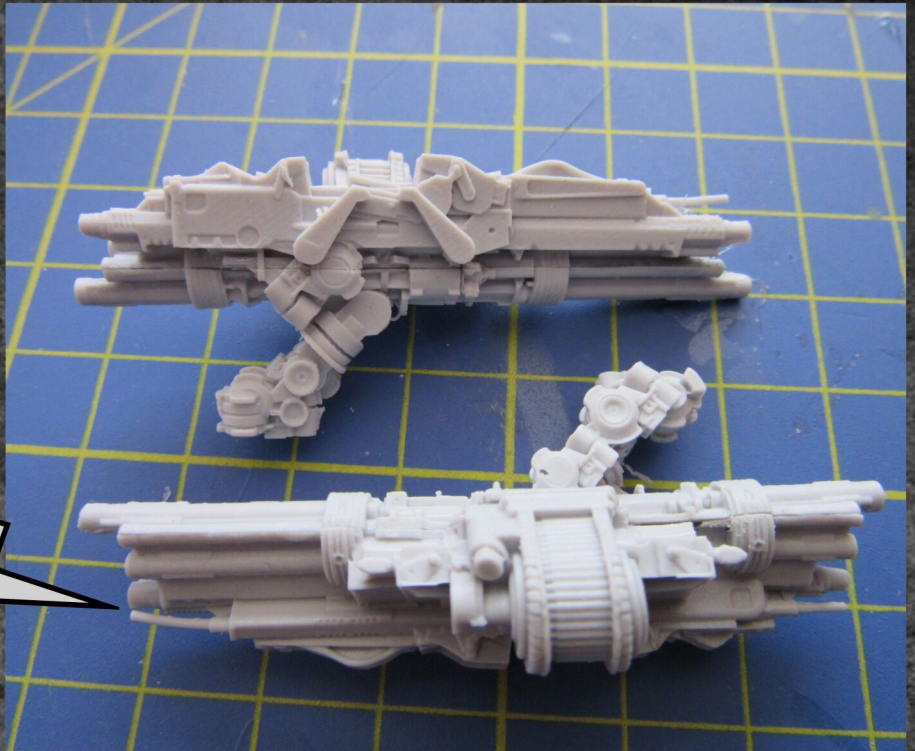
SPOT THE DIFFERENCE



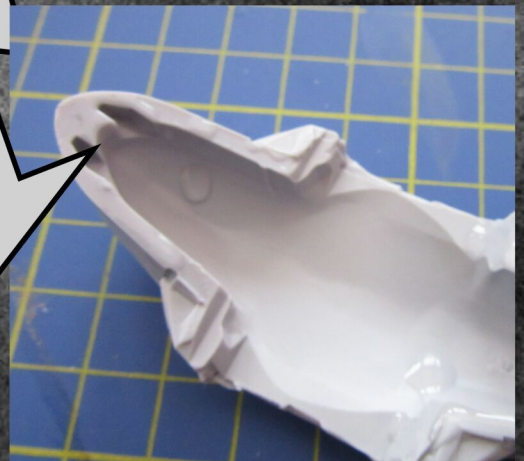
STICKY BIT MONTAGE

INSERT YOUR OWN COOL MUSIC FOR THIS BIT.... I ALWAYS DRY FIT THE PIECES BEFORE GLUING THEM... ENSURE THE BEST FIT YOU CAN MANAGE BEFORE GLUE IS USED.....

USE HOT WATER TO STRAIGHTEN ME!

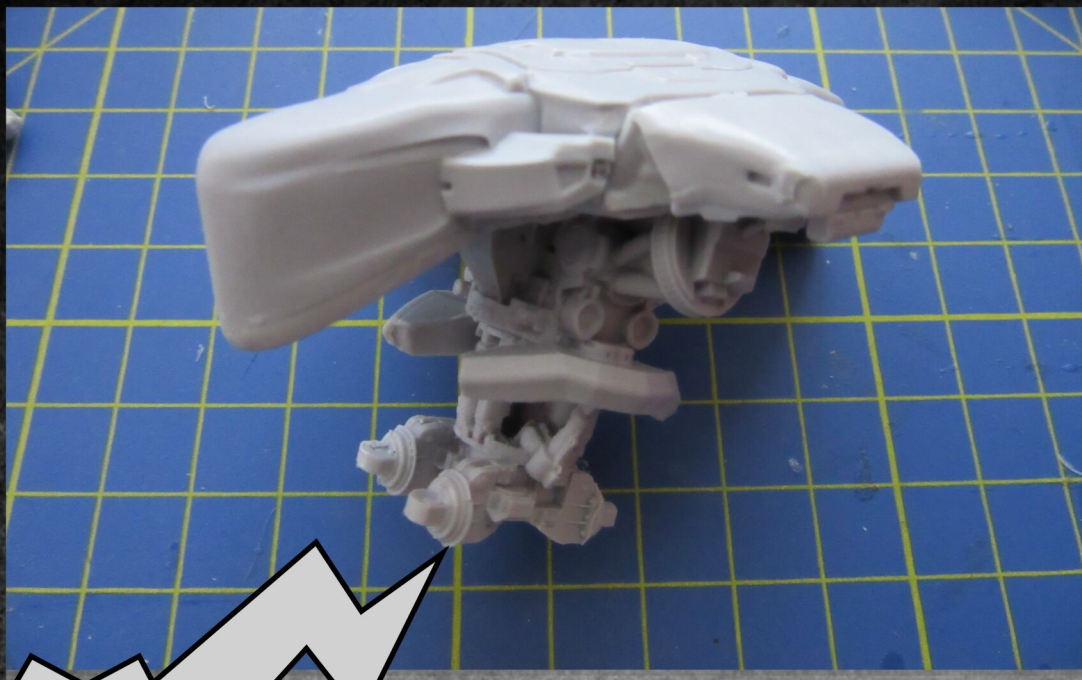


SEE THIS RECTANGLE CUT OUT... THIS MAKES IT THE FRONT OF THE LOWER HEAD..

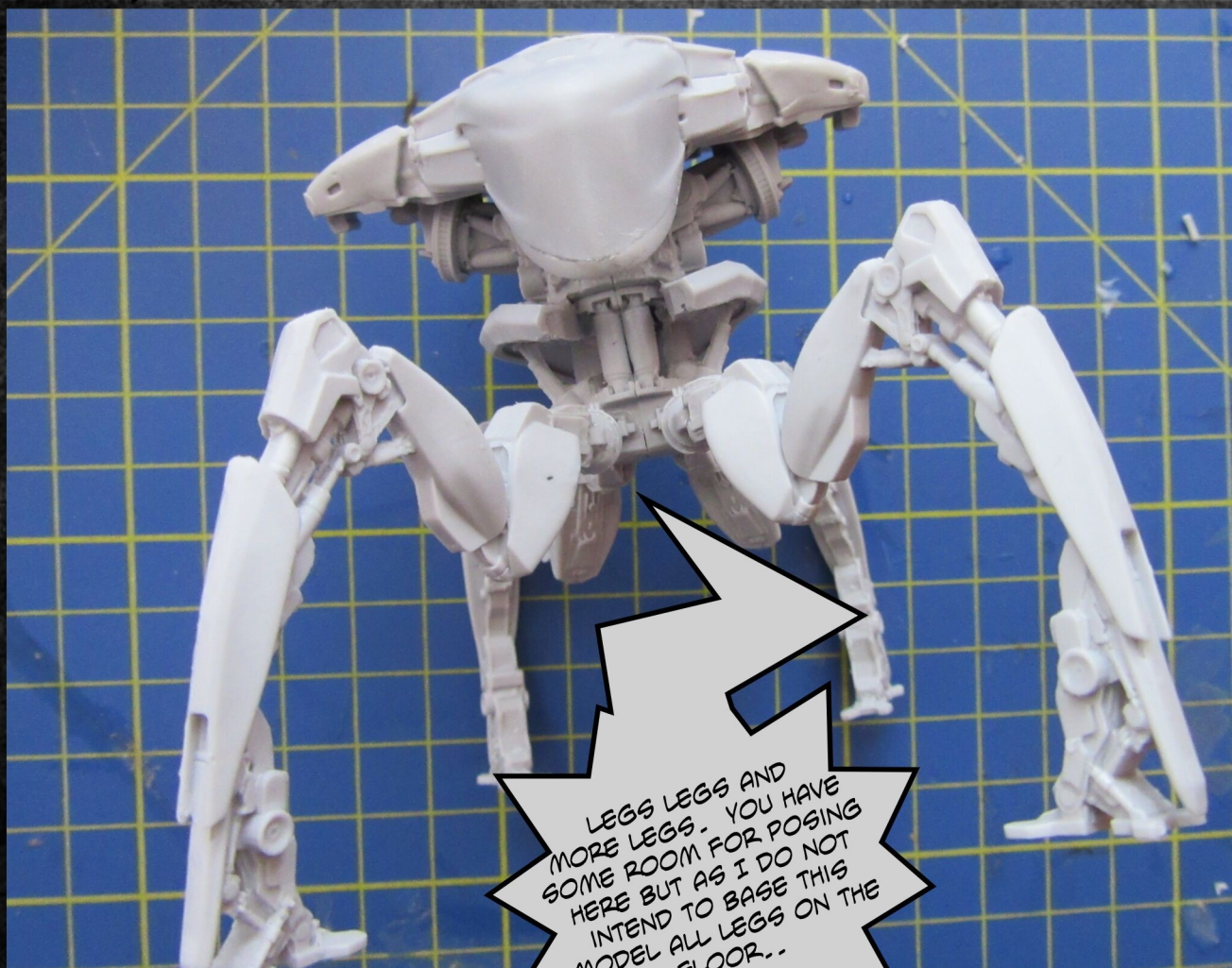


THIS TOOTHED SECTION MAKES IT THE BACK OF THE UPPER HEAD..

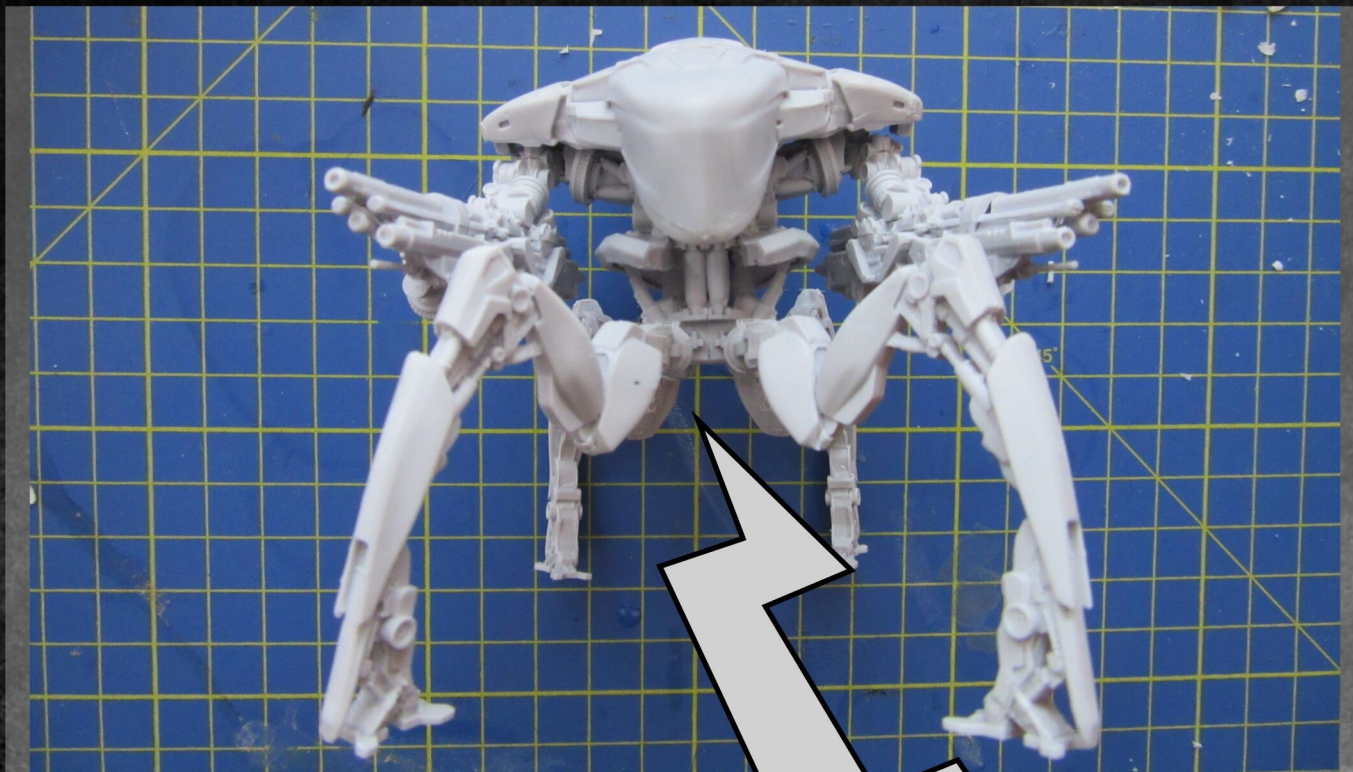
AS YOU GLUE THESE TOGETHERSLIDE THE UPPER SECTION BACK TO CREATE THE BEST FINISH TO THE FRONT



ASSEMBLE TO 2
SECTIONS OF TORSO
AND GLUE TO HEAD...IT
CAN ONLY GO ONE WAY
ROUND...

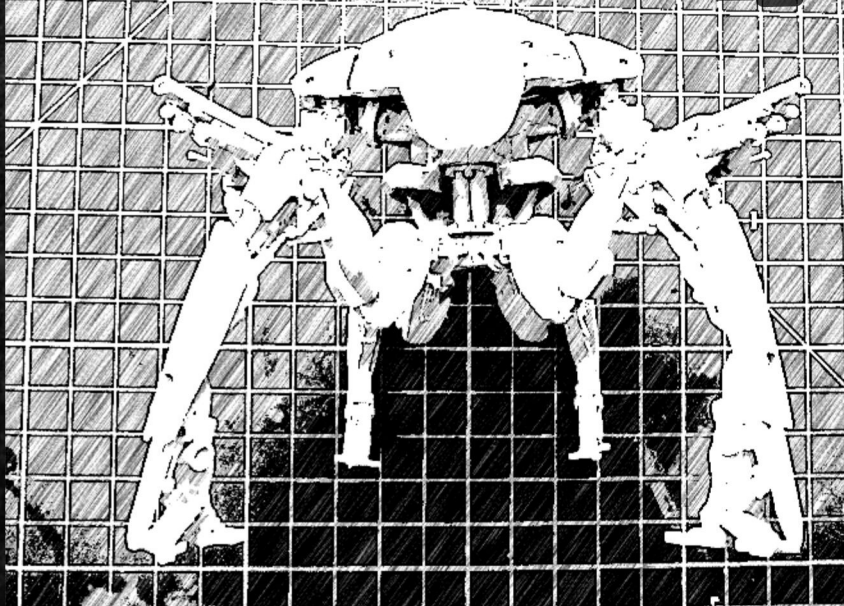


LEGS LEGS AND
MORE LEGS. YOU HAVE
SOME ROOM FOR POSING
HERE BUT AS I DO NOT
INTEND TO BASE THIS
MODEL ALL LEGS ON THE
FLOOR..



LASTLY THE
GUNS/ARMS AGAIN THESE
CAN BE POSED AS YOU
FANCY... THE CONTACT AREA TO
THE SHOULDER IS QUITE SMALL
BUT THIS IS GREAT RESIN THAT
WILL TAKE THE STRAIN...

PEW PEW PEW



HOPEFULLY THAT HAS BEEN
HELPFUL AND A LITTLE
ENTERTAINING

PHOTOS, WRITTEN AND
ARRANGED BY

GARETH WHITE

MODEL AVAILABLE FROM RIVER
HORSE AT RIVERHORSE.EU